

# LUNCH SPECIALS

MON-FRI UNTIL 4PM

\*EXCLUDING HOLIDAYS

## CREATE YOUR OWN LUNCH COMBO

3.5OZ EACH

FOR 1 PERSON

2 ITEMS **\$12.95**

W/ SMALL SALAD,  
MISO SOUP / SEAWEED SOUP & RICE

FOR 1 PERSON

3 ITEMS **\$16.95**

W/ SMALL SALAD,  
MISO SOUP / SEAWEED SOUP & RICE



+\$3

UPGRADE

Harami Miso Skirt Steak\*



+\$3

UPGRADE

Kalbi Short Rib Tare Sweet Soy\*



+\$3

UPGRADE

Beef Tongue\*  
3oz



Bistro Hanger  
Steak Miso



Filet Mignon



New York  
Steak Miso



Kalbi Chuck Rib  
Tare Sweet Soy



Toro Beef  
Tare Sweet Soy



Yaki-Shabu Beef  
Tare Sweet Soy



Pork Belly  
Shio White Soy



Spicy Pork



Pork Toro  
Shio White Soy



Shrimp Garlic  
4 pcs



Chicken Thigh  
Basil

\*Please select 2 or 3 different items (depending on combo option). Duplicate orders will not be allowed. 1 meat upgrade/person/set.

## UPGRADES & ADD-ONS

For Grill Sets

UPGRADE +\$3 Beef Sukiyaki Bibimbap  
*Upgrade from rice*

ADD-ON +\$2 Eggplant

ADD-ON +\$2 Broccoli

ADD-ON +\$2 Spinach Garlic

ADD-ON +\$2 Zucchini

For All Lunch Sets

ADD-ON +\$2 Pork Gyoza Dumplings 3 pcs

ADD-ON +\$2 Takoyaki 3 pcs

ADD-ON +\$2 Edamame



## Sakura Course FOR 2

### STARTERS

Miso Soup x2  
Gyu-Kaku Salad  
Fried Chicken Karaage  
Rice x2

### BBQ ITEMS

Premium Rib Eye Steak  
Filet Mignon  
Bistro Hanger Steak Miso  
Shrimp Garlic  
Mushroom Medley

### DESSERT

Ice Cream x2

**\$39.95**

2 PEOPLE

\$19.98/PERSON

\$82.50 VALUE

\*\*\*No substitutions allowed.

# LUNCH SPECIALS

MON-FRI UNTIL 4PM

\*EXCLUDING HOLIDAYS

## NON-GRILL LUNCH SETS FOR 1 PERSON



### Beef Sukiyaki Bibimbap Set

**\$9.95** FOR 1 PERSON

**+\$2** Extra Beef



Served w/ Miso Soup or Seaweed Soup & Small Gyu-Kaku Salad



### Garlic Noodles Set

**\$9.95** FOR 1 PERSON

Choice of Beef / Veggie / **+\$1** Shrimp



Served w/ Miso Soup or Seaweed Soup & Small Gyu-Kaku Salad



### Chicken Karaage Bowl Set

**\$9.95**

FOR 1 PERSON



Served w/ Miso Soup or Seaweed Soup & Small Gyu-Kaku Salad



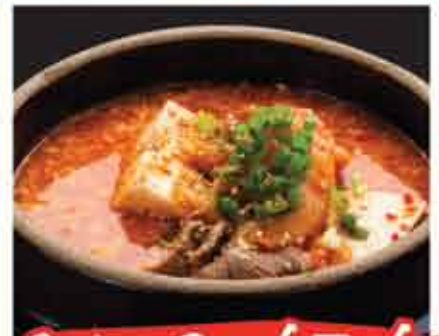
### Spicy Tuna Bowl Set\*\*

**\$9.95**

FOR 1 PERSON



Served w/ Miso Soup or Seaweed Soup & Small Gyu-Kaku Salad



### Spicy Beef Tofu Chigae Soup Set\*\*

**\$9.95**

FOR 1 PERSON



Served w/ Rice & Small Gyu-Kaku Salad

## ADD-ONS

**ADD-ON** +\$2 Pork Gyoza Dumplings 3 pcs

**ADD-ON** +\$2 Takoyaki 3 pcs

**ADD-ON** +\$2 Edamame



\*\*Contains raw seafood or egg. Our food may contain MSG, eggs, soy, milk, wheat and/or nuts. Consuming raw or undercooked meats, poultry, seafood, shellfish or eggs may increase risk of foodborne illness. Request a manager if you have any special diet or allergy concerns before ordering food. \*\*\*No substitutions allowed.